

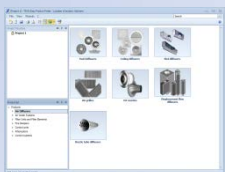
Easy Product Finder 2

Quick start guide EPF 2 – english

TROX GmbH, Neukirchen-Vluyn

October 2012

EPF 2 – Settings and functions (Overview)



1 Task bar

2 Project

3 Products

4 Workspace

Navigation
Please use mouse-click

Overall process EPF 2
Summary and overview about the most important functions

```

    graph TD
      A[Open a project] --> B[Product selection]
      A --> C[Assembling per Assistant]
      B -- AND/OR --> D[Information Bill of material / resources]
      C -- AND/OR --> D
  
```

EPF 2.0.0 (16.10.2012 13:32)



1
Task bar

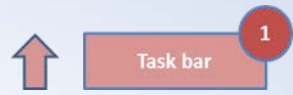
EPF 2 Task bar ... and more

The screenshot shows the main application window with the following components highlighted:

- File Menu:** A red box highlights the 'File' menu, with arrows pointing to 'Settings', 'Print', and 'Print preview'.
- View Menu:** A red box highlights the 'View' menu, with arrows pointing to 'Project Structure', 'Product list', 'Bill of materials', and 'Status Line'.
- Search Window:** A red box highlights the search input field in the top right.
- Product List Table:** A table listing product details is shown in the top right.
- Workspace:** A red box highlights the 'Workspace' area in the bottom right, with arrows pointing to the 'Attenuators Wizard', 'Control Systems Room Wizard', 'Air Diffusers Room Wizard', and 'Air Water Systems Room Wizard'.

Serie	Segment	Description
BE	Control systems	Control panels
ADD	AirDiffusers	ADD
ADLR	AirDiffusers	ADLR, ADLR-Q
AK	Control units	AK
ASL	AirDiffusers	ASL
BID	AirWaterSystems	BID
CA	Attenuators	CA, free cross section
CF	Attenuators	CF, flexible
DID300B	AirWaterSystems	DID300B
DR30	AirDiffuser	Nozzle tube DR-30 HESCO
DUK	JetNozzles	DUK
EW	Control systems	Expansion modules
F210	Filter	F210
F250	Filter	F250
F270	Filter	F270
F340	Filter	F340

EPF 2.0.0 (16.10.2012 13:32)



- File
- New Ctrl+N
- Open... Ctrl+O
- Save Ctrl+S
- Save as...
- Settings**
- Print
- Print preview
- Exit Alt+F4

File - Settings (product segments)

Settings
Basic display mode of product segments

	Min.	Max.	Default
Duct velocity	2,0 m/s	10,0 m/s	5,0 m/s
Volume flow	500 m³/h	34.999 m³/h	
Pressure drop	0 Pa	60 Pa	
Sound power level	0 dB(A)	60 dB(A)	

Tip EPF 2.0:
In case of need please click to reset to standard settings

File

- New Ctrl+N
- Open... Ctrl+O
- Save Ctrl+S
- Save as...
- Settings
- Print
- Print preview**
- Exit Alt+F4

File – Print and print preview

↑

Task bar

1

Report (1)
Hard copy of project structure and product data sheets

Report (2)
Hard copy of project structure and specification text

Project Structure

- Project 1
 - Classification 1
 - Position.01 AIRNAMIC-Q-Z/625/0/RAL 9010
 - Position.02 XARTO-Q-Z/598/0/0/0/RAL 9010
 - Classification 2
 - Position.03 ADD-Q-ZH-M/600/0/0/0/RAL 9010
 - Position.04 FD-Q-Z-H-M/600/0/0/0/RAL 9010
 - Classification 3
 - Position.05 DLQL-P-Z-H-M/400/0/0/0/RAL 9010

Print preview
with comments
Specification Texts

Print preview
with comments
Specification Texts

Print preview
with comments
Specification Texts

Tip:
Select and print single information (position, classification) of the entire project documentation via project structure

Print preview
with comments
Specification Texts

Print preview
with comments
Specification Texts

Print preview
with comments
Specification Texts

View – Project structure and product list

- View**
- Project Structure
 - Product list
 - Bill of materials
 - Toolbar
 - Status Line

Change view:
Activating or deactivating
„Project-structure“ / “Product list”

Define layout via drag + drop:
Organize window layout by relocation of „Project structure“ or „Product list“ as shown in the example

View

- Project Structure
- Product list
- Bill of materials
- ✓ Toolbar
- ✓ Status Line

View – Bill of materials

Task bar 1

OR ...

Bill of materials - [Project 1] - TROX Easy Product Finder

Print | Export Excel

Drag a column header here to group by that column

Item Name	Order code	Quantity	Project path
Position.01	AIRNAMIC-Q-Z/625/0/RAL 90 10	1	Project 1\Classification 1
Position.02	XARTO-Q4-Z/598/0/0/0/RAL 90 10	1	Project 1\Classification 1
Position.03	ADD-Q-ZH-M/600/0/0/0/RAL 90 10	1	Project 1\Classification 2
Position.04	FD-Q-Z-H-M/600/0/0/0/RAL 90 10	1	Project 1\Classification 2
Position.05	DLQL-P-Z-H-M/400/0/0/RAL 90 10	1	Project 1\Classification 3

Project Structure

- Project 1
 - Classification 1
 - Position.01
 - AIRNAMIC-Q-Z/625/0/RAL 90 10
 - Classification 2
 - Position.02
 - XARTO-Q4-Z/598/0/0/0/RAL 90 10
 - Classification 3
 - Position.03
 - ADD-Q-ZH-M/600/0/0/0/RAL 90 10
 - Position.04
 - FD-Q-Z-H-M/600/0/0/0/RAL 90 10
 - Classification 4
 - Position.05
 - DLQL-P-Z-H-M/400/0/0/RAL 90 10

Quantity

Enter quantities acc. to project specification (optional)

Column heading

- Select
- Shift
- Cluster / grouping

Code	Segment	Description
AK	Control systems	Control panels
AD	AirDiffusers	AD
ADL	AirDiffusers	ADL, ADL-Q
AK	Control units	AK
AL	AirDiffusers	AL
AD	AirDiffusers	AD
CA	Expansion	CA, Nozzle section
CT	Expansion	CT, Nozzle
DUK	JetNozzles	DUK
EN	Control units	EN
EN-Ex	Control units	EN-Ex
EW	Control systems	EW, Expansion modules
F210	Filter	F210
F220	Filter	F220
F240	Filter	F240
F242	Filter	F242
F250	Filter	F250
F270	Filter	F270
F340	Filter	F340
F341	Filter	F341
F344	Filter	F344

Search products

Search options
Search products via entering the product serie
OR via alphabetic search in tabular form

22

Serie	Segment	Description
F220	Filter	F220
F622	Filter	F622

OR ...

Serie	Segment	Description
DLQL	AirDiffusers	DLQL
DR30	AirDiffuser	Nozzle tube DR-30 HESCO
DUK	JetNozzles	DUK
EN	Control units	EN
EN-Ex	Control units	EN-Ex
EN-Ex	Control units	EN-Ex
EW	Control systems	Expansion modules
F210	Filter	F210
F220	Filter	F220
F240	Filter	F240
F242	Filter	F242
F250	Filter	F250
F270	Filter	F270
F340	Filter	F340
F341	Filter	F341
F344	Filter	F344



2 Window „Project structure“

Storage concept:

- Add item
- Accept changes
- Discard changes

3 Manage project structure, e. g.

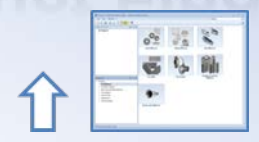
- Insert classification
- Modify project structure via drag + drop

4 Workspace

Product selection
Basic input to start a new project

3
Products

Window „Product list“



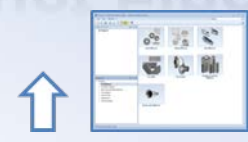
OR ...

Product list
Navigation via product photo or directory structure of product list

Product list

- Products
 - Air Diffusers
 - Swirl diffusers
 - Ceiling diffusers**
 - Slot diffusers
 - Air grilles
 - Jet nozzles
 - Displacement flow diffusers
 - Nozzle tube diffusers
 - Air Water Systems
 - Filter Units and Filter Elements
 - Fire Dampers
 - Control units
 - Attenuators
 - Control systems

4 Product selection
Workspace



Product selection via:
Order code or technical product data

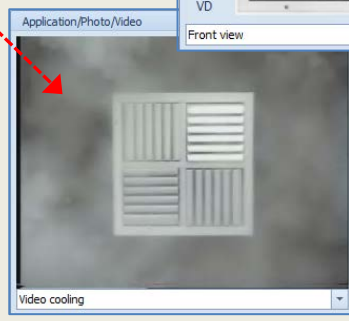
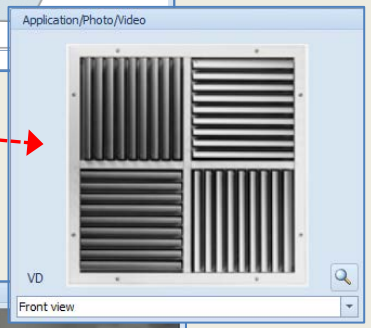
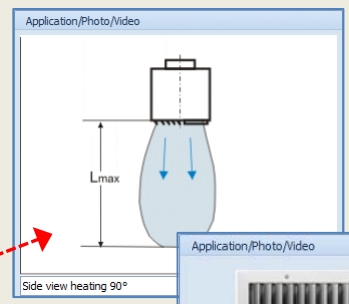
Media Centre:

- Pattern
- Photos
- Videos (partial)

The screenshot shows the 'Product selection' tab of the software. The 'New Item: Order code' field contains 'VD-H-E1 / 600 / 0 / 0 / 0 / E6-C-0'. The 'Input' section includes:

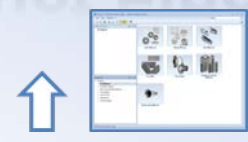
- Volume flow [m³/h]: 1.632 (739...3600)
- Spacing distances [m]: a=6,00 (≥2,0), h₁=3,00 (2,0...10,0), x=4,00 (≥2,0)
- Temperature difference [K]: Δt_{ac}=-8,0 (-12,0...0,0), Δt_{zh}=10,0 (0,0...15,0)
- Heating Discharge angle: 90°

 The 'Product list' on the left shows 'Air Diffusers' with 'Swirl diffusers' expanded, and 'VD' highlighted in red. A 'Specification sheet' window is open, showing technical details for the selected product. A blue box labeled 'abc' is positioned at the bottom right of the interface.



4
Workspace

Selection by wizards



- Wizards**
- Attenuators Wizard
 - Control Systems Room Wizard
 - Air Diffusers Room Wizard
 - Air Water Systems Room Wizard

Attenuators

Attenuators Wizard

Aerodynamic Data

Volume flow: 5 m³/h (0...30400)

Air velocity Max: 20.00 m/s

Flow noise Max: 65 dB(A)

Pressure drop Max: 30 Pa

Insertion Loss Min. [dB]

All octaves

63 Hz: 0

125 Hz: 0

250 Hz: 20 (0...50)

500 Hz: 0

1 kHz: 0

2 kHz: 0

4 kHz: 0

8 kHz: 0

Size [mm]

Width (exact): 4.800 mm (0...1400...4800)

Height (exact): 3.600 mm (150...3600)

Length (max.): 3.000 mm (500...3000) Fix

Attenuators

Filters: 4 of 8 results displayed.

Casing: with casing Number per series: 2

Order code	Spk.	Qu...	W...	Size [mm]	L	H	L	ΔPT	LWA	v(f)	Attenuation [Hz]						
MSA300-100-16-WF/48...	200	96	1732	4800	3600	1800	0	<15	0	5	15	32	35	25	16	14	
MSA300-100-12-WF/480...	300	12	2024	4800	3600	1750	0	<15	0	6	19	33	48	50	36	23	
MSA300-180-10-WF/480...	300	10	2160	4800	3600	2250	0	<15	0	4	18	33	46	50	42	22	13
MSA300-143-14-WF/48...	200	14	2280	4800	3600	2000	0	<15	0	5	15	31	31	30	21	14	12

Wizards:
Easy support for more complex product selections or complete room designs

Air diffusers

Air Diffusers Room Wizard

Room Selection data Arrangement Results

Filtering options

Product selectors: Number per series: 2

QTY	Order Code	v [m/s]	v _{eff} [m/s]
4 (2x2)	ADH4MHC-R-2/400x/0/RAL 9010	0,15	0,15
5 (1x5)	VDF-Q-Z-H-M/600x/0/RAL 9010	0,20	0,20
5 (1x5)	TDF-SA-Q-Z-H-M/600x/0/RAL 9010	0,20	0,20
6 (1x6)	TDF-SA-Q-Z-H-M/600x/0/RAL 9010	0,20	0,20
6 (1x6)	FD-Q-Z-H-M/500x/0/RAL 9010	0,21	0,21
7 (1x7)	RFD-R-O-A-M/1215/0/RAL 9010	0,19	0,19
7 (1x7)	FD-Q-Z-H-M/400x/0/RAL 9010	0,20	0,20

Outlet arrangement

Product Picture

Control systems

Control Systems Room Wizard

Room

Short name* Long name

Basic data

System: EASYLAB Control variant: Extract air led

Room height: 3,00 m (>0,0) Air transfer: 100 m³/h

Useful floor area: m² (>0,00) Minimum room extract air: m³/h (0)

Total extract air to DB: m³/h

Extract air from design stage: m³/h (>0) Note

Additional Data

Air water systems

Air Water Systems Room Wizard

Room Selection data Arrangement Results

Filtering options

Product selectors: Number per series: 2

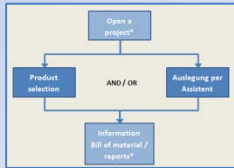
QTY	Order code	1/1p [m ³ /h]
55 (5x11)	DD3008-4-K-H-LV/2400x900/0/RAL 9010/0	13
26 (4x6)	DD3008-4-K-H-LV/1750x1200/0/RAL 9010/0	20
27 (3x9)	DD312 OE-UR-4-M-AL-Q/900x900x293/0/RAL 9010/0	26
16 (2x8)	DD312 OE-UR-4-M-AL-Q/1500x1500x293/0/RAL 9010/0	44
35 (5x7)	DD6208-4-K-H-LV/1714x1200/0/0/RAL 9010/0/0	20
30 (5x6)	DD6208-4-K-H-LV/2000x1500/0/0/RAL 9010/0/0	24
15 (3x3)	DD6212 OE-UR-4-M-AL-Q-0/1400x900x593/0/RAL 9010/0/0	47
12 (4x3)	DD6212 OE-UR-4-M-AL-Q-0/1750x1200x593/0/RAL 9010/0/0	99

Outlet arrangement

Product Picture

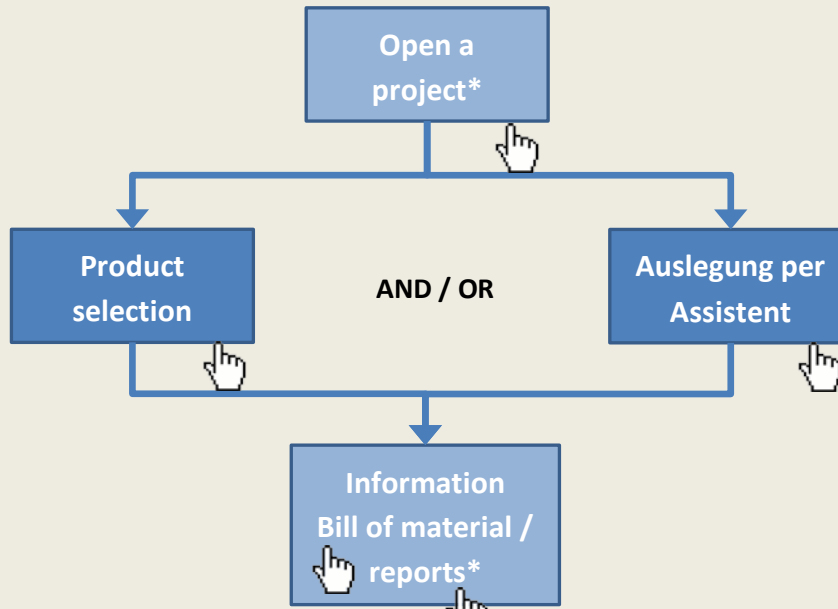


Overall process EPF 2 / Summary



- Projects**
- ✓ Projects for all product selections
 - ✓ Individual organization of projects

- Individual product selection**
- ✓ Product selection
 - ✓ Technical design
 - ✓ Drawings, photos etc.
 - ✓ Specification text
 - ✓ Project modification
 - ✓ Print reports



- Selection via wizards**
- ✓ Help application for:
 - Attenuators,
 - Control systems,
 - Air diffusers,
 - Air water systems
 - ✓ Control systems including room balances
 - ✓ Add selections to projects
 - ✓ Project design including room data

- Bill of materials und reports**
- ✓ Bill of materials can be modified and exported
 - ✓ Print reports

*optional functions